

Original Variety:

Max Compact Exterior Projects



for
people
who
create

Original inspirational.

Architecture is more than purpose. It is language, feeling, expression – and at the same time restricted to the realm of what is possible. With a variety of innovative designs, FunderMax opens up whole new worlds of architectural freedom and paves the way from the first idea to its final realization. The original delivers on its promise.

This brochure shows you what architects have created so far with FunderMax: multifaceted, authentic and colorful. Let yourself be inspired to also give your buildings character!

www.fundermax.at





FUNDERMAX

exterior

4	SINGLE-FAMILY HOUSE
10	RESIDENTIAL COMPLEX
16	OFFICE BUILDING
24	INDUSTRIAL BUILDING
30	HOTELS
40	EDUCATIONAL INSTITUTION
46	PRODUCTS

for
people
who
create

Kollektion Range of Decors







Photo: Frenchie Cristogati


Photos: Frenchie Cristogati





**PRIVATE RESIDENCE MONTS D'OR
FRANCE, LYON**

Architect. D.P.L.G. Laurent Guillard-Lozanne.
Surface. NT.
Decor. 0085.

 [More information available in show:room](#)




**SINGLE-FAMILY HOUSE
HUNGARY, TÖRÖKBÁLINT**

Architect. Toth Project.

Surface. NG.

Decor. 0070. 0742

 [More information available in show:room](#)



Photos: Bujnovszky Tamás

**PRIVATE RESIDENCE JADE
USA, NORTH WILDWOOD**

Architect. E/L Studio Washington DC.
Surface. NT.
Decor. 0080. 0085. 0662.



Photo: EL Studio

**SINGLE-FAMILY HOUSE
UNGARN, MOSONMAGYARÓVÁR**

Architect: Tóth Project Architect Office
Surface. NT.
Decor. 0798.



Photo: Batár Zsolt





Photos: C+B Architecte, Serge Botello

**LES LOFTS DE LA BAUME
FRANCE, METZ**

Architect. Serge Botello (C + B Architecte).

Surface. NT.

Decor. AUTN.

👁 [More information available in show:room](#)

Photos: Jordi Surroca



**RESIDENTIAL BUILDING
SPAIN, BARCELONA**

Architect. Roldán y Berenguer.
Surface. NT.
Decor. 0026. 0027.



Photo: Alumina Elit 2003 EOOD



**RESIDENTIAL COMPLEX GESHOV
BULAGRIA, SOFIA**

Architect. Arch. Zvetan Petrov -
Studio Ivo Petrov Architects.
Installer. Alumina Elit 2003 EOOD
Surface. NT.
Decor. 0923.

Photo: Vilbestos projektai



**RESIDENTIAL COMPLEX VILMESTA
LITHUANIA, VILNIUS**

Installer. Exterus.

Surface. NT.

Decor. 0077. 0693. 0661.



**SATTVA GALLERIA
INDIA, HEBBAL**

Architect. Sudhakar Pai.
Surface. NG. NT.
Decor. 0085.



Photos: Shamanth Patil, Rays & Greys

Photo: Architekturbüro Ternes





**ENERGY-EFFICIENT HOUSE WITH E-MOBILITY
GERMANY, KOBLENZ**

Architect. Ternes Architekten BDA.

Surface. NT.


Decor. 0091.

**OFICINAS INDAR
SPAIN, BEASAIN**

Architect. Jesus Jauregui.

Surface. NT.

Decor. 0159. ID.

 [More information available in show:room](#)





Photos: Jesus Jauregui

**SPARKASSE BÜHL
GERMANY, OTTERSWEIER**

Architect. Michael Frank.
Surface. NT.
Decor. 0674.



**GENESIS FRANKREICH
SAINT-ÉTIENNE-DU-ROUVRAY**

Architect. Ataub Architectes.
Surface. NG.
Decor. 0080. 0085.



Photo: Grégoire Auger



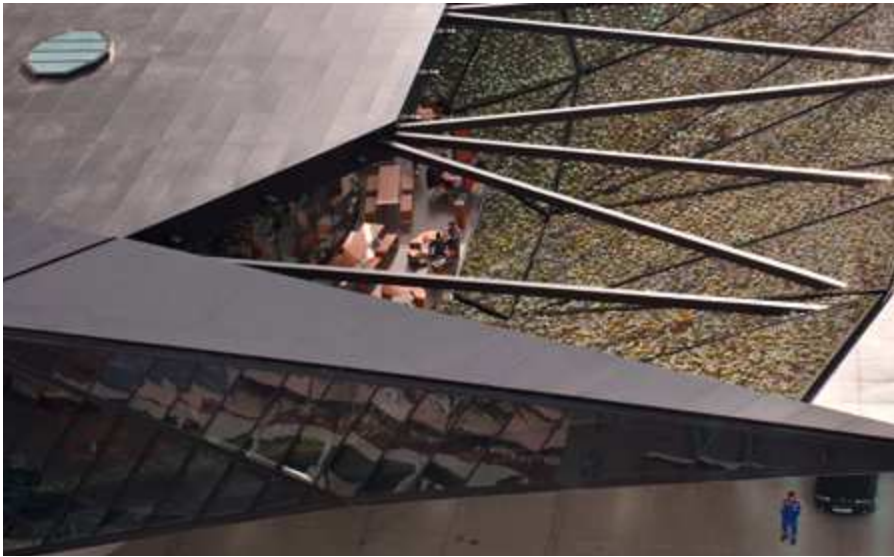
Photo: Michael Frank

Photo: Anand Jaju Photography



**ELECTRONIC CITY
INDIA, BANGALORE**

Architect. PN Architects.
Surface. NT.
Decor. 0794.



Photos: Giorgi Khmaladze



**MC DONALDS
GEORGIA, BATUMI**

Architect. Ataub Architectes.

Surface. NT.

Decor. 0080. 0085.

👁️ [More information available in show:room](#)







**FIRE DEPARTMENT RIMSINGEN
GERMANY, RIMSINGEN**

Architect. Roller Architekten.
Surface. NT.
Decor. 0741. 0742. 0074. 0085.



Photos: Francisco Manosalvas





**FURNITURE STORE RESIDENZA
DOMINICAN REPUBLIC**

Architect. Patricia Sención.
Surface. NT.
Decor. AUTN. 0427.

Photos: Hannes Kohlmeier





**PRO GE HAUS
AUSTRIA, KRUMPENDORF**

Architect. DI Andreas Krainer.
Surface. NT
Decor. 0161





HOTEL DE UCO
ARGENTINA, MENDOZA

Photos: Estudio Alberto Tonconogy

Architect. Alberto Tonconogy.
Surface. NT.
Decor. 0160.

👁️ [More information available in show:room](#)







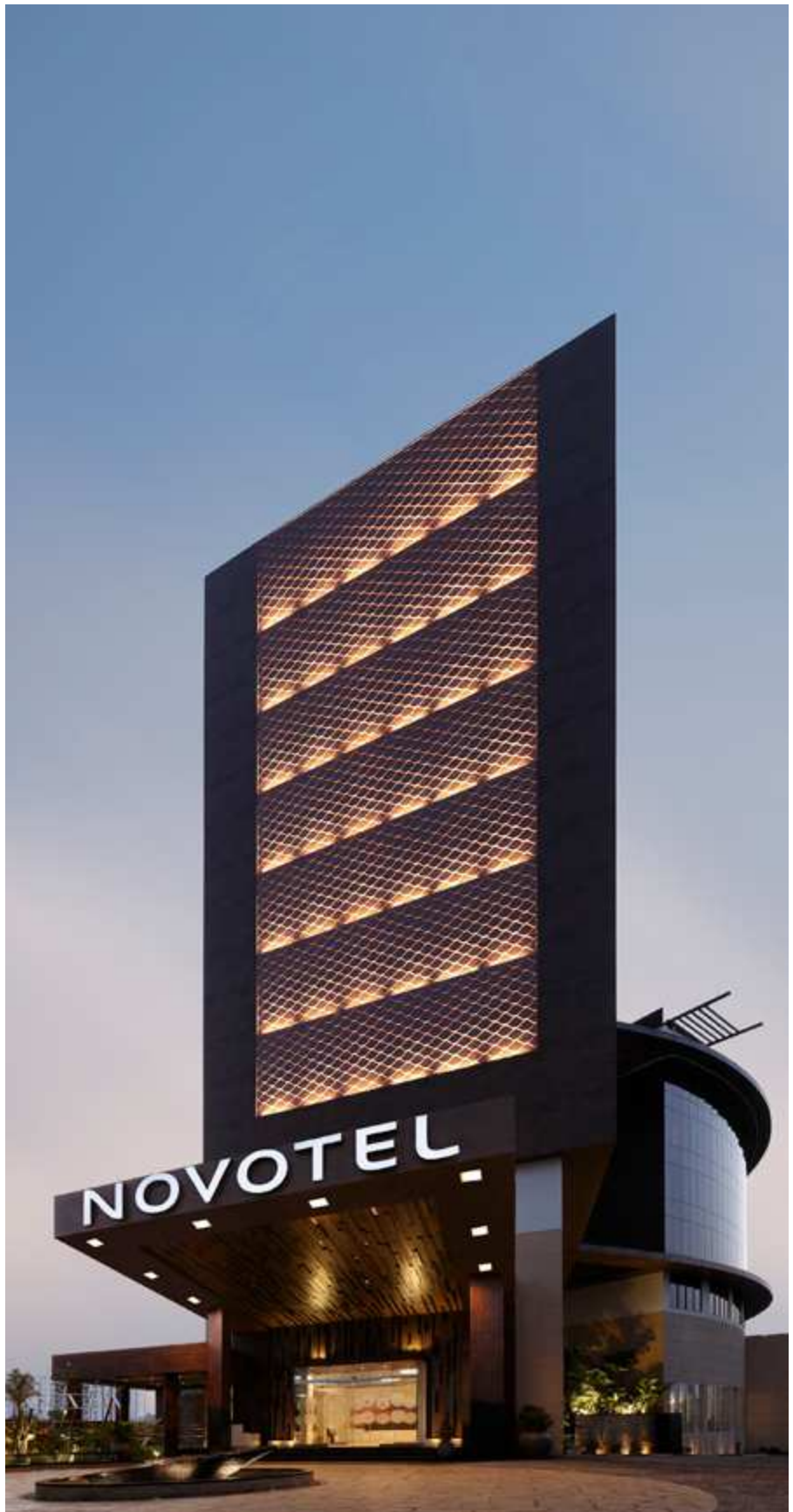


**BOARDING HOUSE 7THINGS
GERMANY, BREMEN**

Installer. Kohlmeyer Fassadenbau GmbH.
Surface. NT.
Decor. ID. 0070.

**NOVOTEL
INDIA, KOCHI**

Architect. Naveen Sam.
Surface. NT
Decor. 0429



Photos: Muthoot Prappachan Group



**NOVUM HOTEL NIU ESSEN
GERMANY, ESSEN**

Architect. Europa-Center AG.
Surface. NY
Decor. 0496.

Photos: Europa-Center AG/Dirk Matull



Photos: Peter Langenhahn



**CHILDREN'S HOME JÖHLINGEN
GERMANY, WALZBACHTAL**

Architect. Peter Langenhahn.
Surface. NT.
Decor. 5171.



Photos: John Gawley





**LEARNING COMMUNITY CENTER
USA, NORTH OMAHA**

Architect: RDG Planning and Design

Surface: NT

Decor: 0717, 0237, 0725, 0712

👁️ [More information available in show:room](#)





Photos: Johannes Hemetsberger

**ELEMENTARY SCHOOL
AUSTRIA, KRONSTORF**

Architect. Eder ZT GmbH.

Surface. NT.

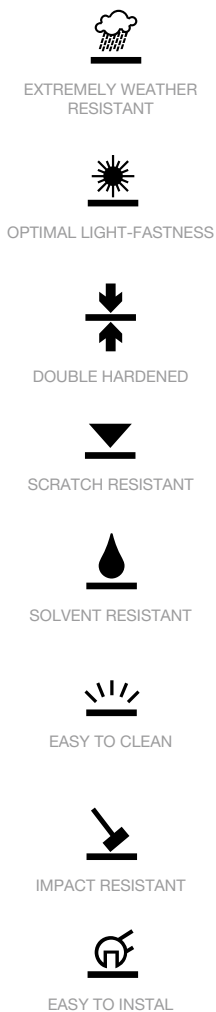
Decor. ID.

👁️ [More information available in show:room](#)



What Max Compact Exterior Can Do

Max Compact Exterior panels are duromer high-pressure laminates (HPL) in accordance with EN 438-6 Type EDF that are produced in lamination presses under great pressure and high temperature. Double-hardened acrylic PUR resins provide extremely effective weather protection that is particularly suitable for longlasting balconies and facade claddings.



PROPERTIES*:

- Weather resistant to EN ISO 4892-2
- Lightfast acc. to EN ISO 4892-3
- Double hardened
- Scratch resistant
- Solvent resistant
- Hail resistant
- Easy to clean
- Impact resistant EN ISO 178
- Suitable for all exterior applications
- Decorative
- Bending resistant EN ISO 178
- Frost and heat resistant
- Constant temperature load
-80 °C to 80 °C
- Easy to install

*STANDARD- AND ACTUAL-VALUES YOU WILL FIND ON OUR WEBSITE WWW.FUNDERMAX.AT

Max Compact Exterior F-Quality

Max Compact Exterior is a high-quality construction product which is used especially for long-lasting balcony and facade claddings. Max Compact Exterior panels are duromer high-pressure laminates (HPL) in accordance with EN 438-6 Type EDF with extremely effective weather protection. This weather protection consists of double-hardened acrylic poly- urethane resins. They are produced in lamination presses under great pressure and at high temperatures. Max Compact Exterior panels are, of course, labelled with the CE-Mark necessary for their use in building applications.

SURFACES

NT	
NH (Hexa)/NT	(format 4100 x 1854 mm only)
NG* (Gloss)/NG (Gloss)	(format 4100 x 1300 mm only)
NY (SKY)/NT	(format 4100 x 1300 mm only, thicknesses 6 and 8 mm, limited decor range)

FORMATS (aprox)

9'2 1/4" x 4' 3"	= 39.25 sf (2800 x 1300 mm)
13' 5 1/8" x 4' 3"	= 57.44 sf (4100 x 1300 mm)
9'2 1/4" x 6' 5/8"	= 55.79 sf (2800 x 1854 mm)
13' 5 1/8" x 6' 5/8"	= 81.65 sf (4100 x 1854 mm)

* TO GET A PERFECT DESIGN OF THE FACADE CLADDING WITH NG SURFACE IT IS RECOMMENDED TO GLUE THE PANELS ON AN ALUMINIUM-SUBCONSTRUCTION. SUB-CONSTRUCTION LIKE WOOD DO NOT HAVE THE RIGHT PROPERTIES TO AVOID A WAVY APPEARANCE OF THE CLADDING.

CORE

F-quality, flame-retardant, colour brown

THICKNESSES

Panels with double-sided decor:

Thicknesses	Tolerances (EN 438-6, 5.3)
2,0 - 2,9 mm	± 0,2 mm
3,0 - 4,9 mm	± 0,3 mm
5,0 - 7,9 mm	± 0,4 mm
8,0 - 11,9 mm	± 0,5 mm
12,0 - 13,0 mm	± 0,6 mm

Panels with the Hexa surface:

Dicken	Toleranz (EN 438-6, 5.3)
6,0 - 7,9 mm	± 0,4 mm
8,0 - 11,9 mm	± 0,5 mm
12,0 - 15,9 mm	± 0,6 mm
16,0 - 20,0 mm	± 0,7 mm

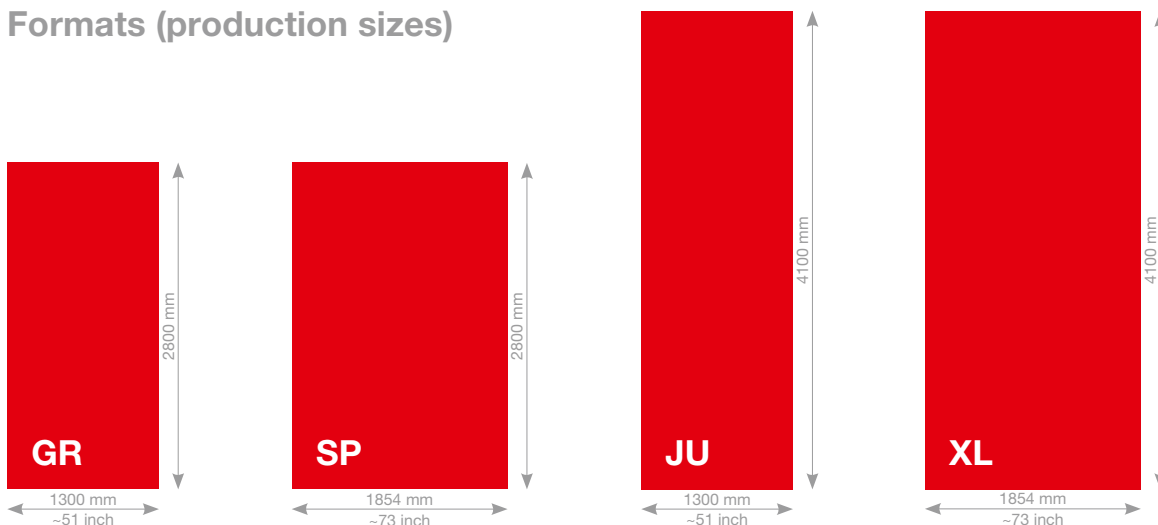
Panels with sanded-reverse side:

For symmetrically structures sandwich elements.

Thicknesses	Tolerances (EN 438-6, 5.3)
2,0 - 2,9 mm	± 0,2 mm
3,0 - 4,0 mm	± 0,3 mm

In order to be able to design the inner sides of balconies with a uniformly light look, it is also possible to produce Max Compact Exterior panels with a white (rear) side using decor 0890 NT – Balcony white. As a result of the differing decor structure, the fastening spacings given in our Technical Information brochures should be reduced by about 15 %.

Formats (production sizes)



TOLERANCES +10 - 0 MM (EN 438-6, 5.3)
 PANEL FORMATS ARE PRODUCTION FORMATS. IF EXACT DIMENSIONS AND ANGLES ARE NECESSARY, WE RECOMMEND AN ALL-SIDED BLANK. DEPENDING ON THE METHOD OF TRIMMING, NET SIZE IS REDUCED BY CA. 10 MM.

FunderMax Deutschland GmbH
Industriestrasse 1
D-92442 Wackersdorf
infofgermany@fundermax.biz
www.fundermax.de

FunderMax France SARL
3 Cours Albert Thomas
F-69003 Lyon
Tel.: + 33 (0) 4 78 68 28 31
Fax: + 33 (0) 4 78 85 18 56
infofrance@fundermax.biz
www.fundermax.fr

FunderMax India Pvt. Ltd.
No. 13, 1st Floor, 13th Cross
Wilson Garden
IND-560027 Bangalore
Tel.: +91 80 4112 7053
Fax: +91 80 4112 7053
officeindia@fundermax.biz
www.fundermax.at

FunderMax Italia S.R.L.
Viale Venezia 22
I-33052 Cervignano del Friuli
infoitaly@fundermax.biz
www.fundermax.it

FunderMax North America, Inc.
9401-P Southern Pines Blvd.
Charlotte, NC 28273
Tel.: +1 980 299 0035
Fax: +1 704 280 8301
office.america@fundermax.biz
www.fundermax.at

FunderMax Polska Sp. z o.o.
ul. Rybitwy 12
PL-30 722 Kraków
Tel.: + 48-12-65 34 528
Fax: + 48-12-65 70 545
infopoland@fundermax.biz

FunderMax Swiss AG
Industriestrasse 38
CH-5314 Kleindöttingen
Tel.: + 41 (0) 56-268 83 11
Fax: + 41 (0) 56-268 83 10
infoswiss@fundermax.biz
www.fundermax.ch

FunderMax GmbH

Klagenfurter Straße 87-89, A-9300 St. Veit/Glan
T +43 (0) 5/9494-0, F +43 (0) 5/9494-4200
office@fundermax.at, www.fundermax.at