



METAL FINISHING

architectural materials | decorative technologies

Latest generation plants, executive precision and creativity to create, on the metal surfaces, the required expressive suggestion.

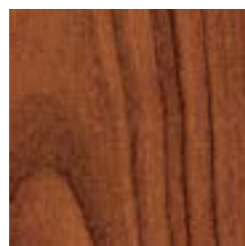
Atena "**Finishing Modes**" includes a variety of architectural materials and decorative technologies, such as coating, sublimation, moldings, laser cutting and pointillism techniques, to **reproduce infinite chromatic varieties and exceptional stylistic results.**

The aesthetic metal finishing represents an important phase of the manufacturing process, and includes a wide range of decorative techniques, a know-how that Atena has achieved in over 30 years of projects for cruise ships: high levels of precision in execution, continuous research of new materials and latest generation machines to ensure high quality standards.

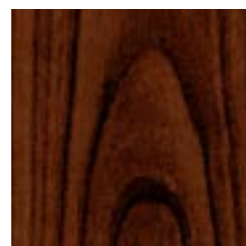
STANDARD STEEL WOODS



L04 - LIGHT MAPLE
steel 6/10



L04 - MEDIUM DURMAST
steel 6/10



L04 - DARK WALNUT
steel 6/10

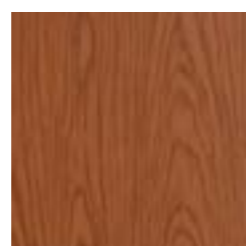
STANDARD ALUMINUM WOODS



L07 - MEDIUM PINE
aluminum 5-6-7/10



L13 - CHENE IRLANDAIS
aluminum 5-6-7/10



L17 - OREGON 4
aluminum 5-6-7/10



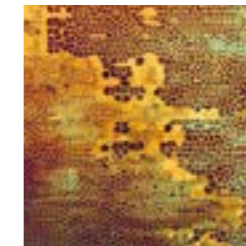
L14 - MADERA BRAZIL
aluminum 5-6-7/10



SUBLIMATIONS



S01 - TAPESTRY
steel | aluminum



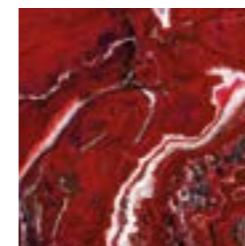
S02 - MOSAIC
steel | aluminum



S03 - CALEIDO
steel | aluminum



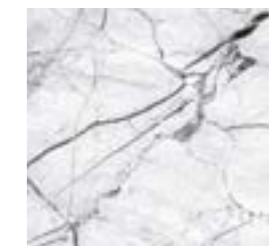
S04 - ABYSSES
steel | aluminum



S05 - SICILY
steel | aluminum



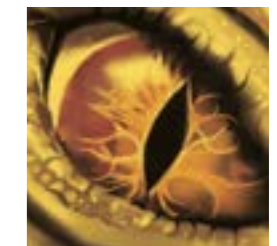
S08 - RAINBOW PLUME
steel | aluminum



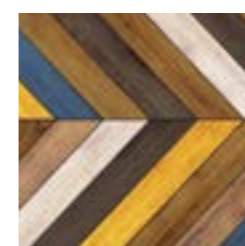
S06 - STATUARIETTO
steel | aluminum



S07 - BLUE PRINCESS
steel | aluminum



S09 - DRAGON EYE
steel | aluminum



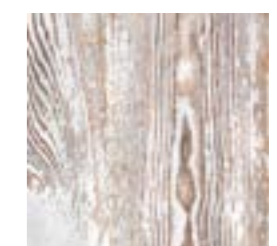
S10 - VINTAGE
steel | aluminum



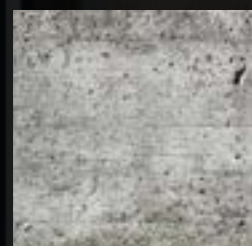
S11 - LOUNGE
steel | aluminum



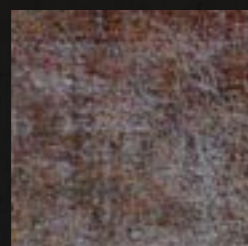
S12 - SEA WOOD
steel | aluminum



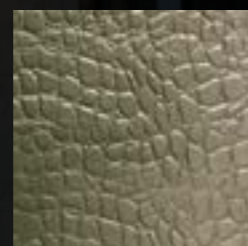
S13 - ALBA
steel | aluminum



S14 - CONCRETE
steel | aluminum



S15 - CORTEN
steel | aluminum



S16 - CROCODILE
steel | aluminum

The image sublimation technology give to the settings a true realistic appeal. While the gloss finishing makes it bright and light contrasting, creating a strong visual impact, mat surfaces have a soft and velvety look, right for art reproductions and wood effects.

METAL RIPPLES



ST - WATER EFFECT
steel



DOT-ART

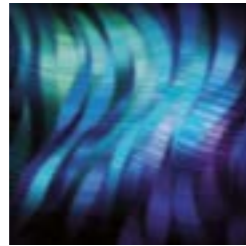


Atena Dot-Art technology powered by the patented ACT / SIGN software convert images into small dots spread over the metal surface.

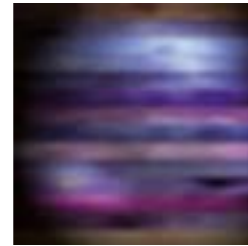
ART-BRUSHING



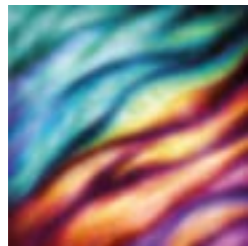
B01 - MADREPERLA
steel | aluminum



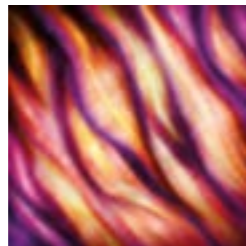
B02 - OCEAN
steel | aluminum



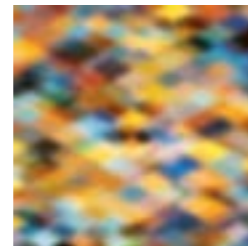
B03 - GOTICH MOON
steel | aluminum



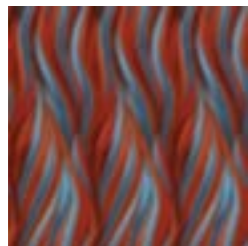
B04 - SEA SUNSET
steel | aluminum



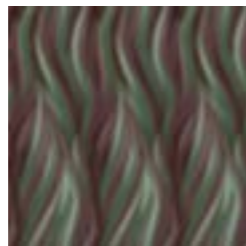
B05 - LILIUM
steel | aluminum



B06 - MANET
steel | aluminum



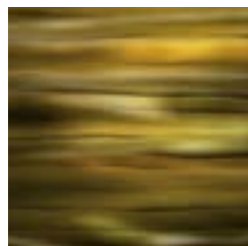
B07 - RED WAVE
steel | aluminum



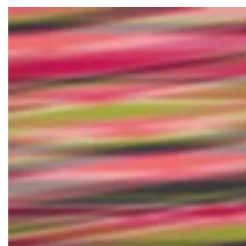
B08 - LEAF
steel | aluminum



B09 - LIGHT GLOW
steel | aluminum



B10 - MINERVA
steel | aluminum



B11 - FUXA
steel | aluminum



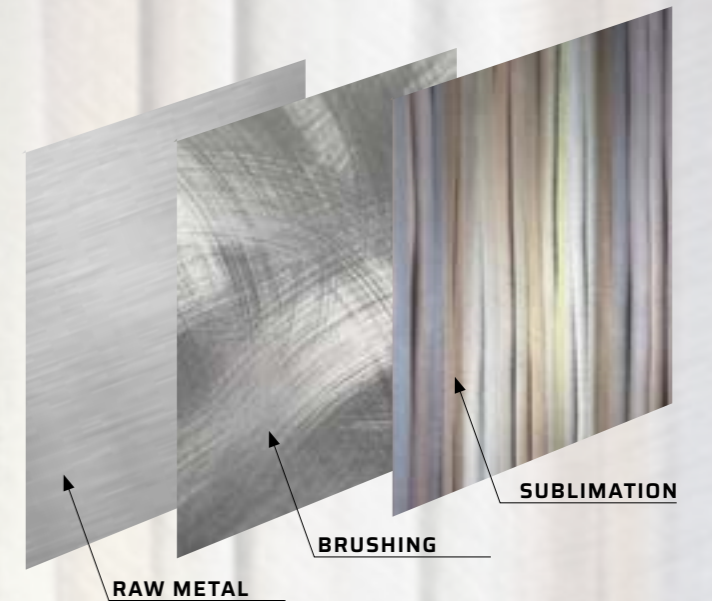
B12 - TARTAN
steel | aluminum

THE ARTISTIC PROCESS

The decorative system "**Art Brushing**" has been conceived to create decorative solutions that combine the beauty of brushed metal and the appeal of a texture sublimation.

One of the most sophisticated process to obtain a very refined result:

- decorative brushing design;
- pre-sublimation treatment and metal sublimation;
- protective coating and metal shaping.





Atena S.p.A.

Via A. De Gasperi, 52 - 30020 Gruaro (VE) Italia
Tel: +39 0421 75526 - Fax: +39 0421 75692
atena-it.com - info@atena-it.com