

A hand is shown from the bottom, holding a large, billowing cloud of fine white powder that rises into the air. The background is dark, making the white powder stand out. The overall mood is one of creation and potential.

Worktops

For you to create

Fundermax





FUNDERMAX WORKTOPS

- 4 Properties
- 6 Aptico
- 10 Saxum
- 12 Enduro
- 16 Rigo
- 18 Fine Hammer Embossed
- 20 NT
- 23 Delivery options

WORKTOPS

The perfect combination of design and functionality in the kitchen.

As a central element of every kitchen, the worktop shapes the character of the entire room and has to do more than just impress with its looks. Fundermax worktops stand out as they are highly resilient, easy to clean and extremely durable. Thanks to their surface quality, they prevent the spread of bacteria.

The high pressure laminates (HPL) can be processed with millimeter precision, so you can plan the exactly kitchen you want. The worktops are delivered in a dimension of 4,100 x 1,300 mm with a thickness of 12 mm.

Surfaces

Six hygienically sealed, resistant structures



Visible Core

Jet black, brown or white
(depending on the surface)







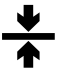

Design

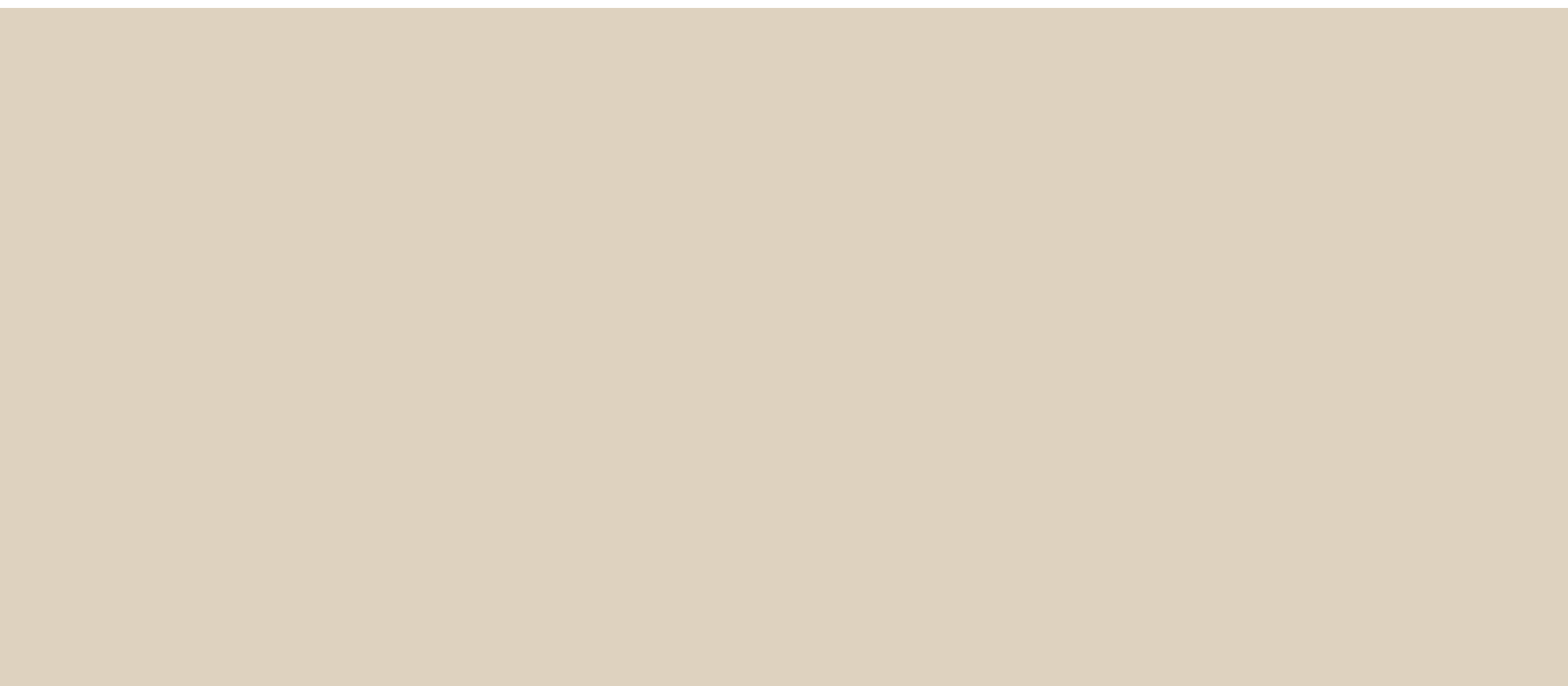
Fitting decors for every kitchen design



Panel thickness

Slim 12 mm design in line with the current design trend

-  Easy to clean
-  Impact resistant
-  Food Grade
-  Heat resistant
-  Scratch resistant
-  Solvent resistant
-  Durable
-  Quick installation





APTICO (AP)

Core:
Jet Black

Decor:
Solid

Surface:
Anti-fingerprint
Matte
Very fine structure

APTICO (AP)



Aptico impresses with its warm appearance and fine structure. Thanks to the matt finish, the respective decor is presented in a particularly appealing manner. The anti-fingerprint effect ensures a permanently flawless appearance.



0080
BLACK

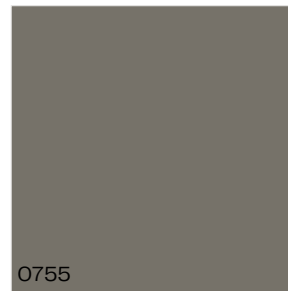
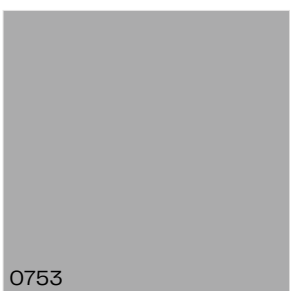
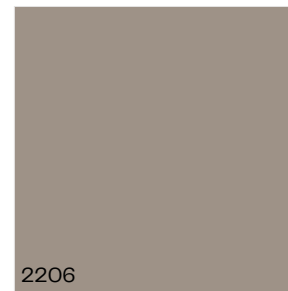
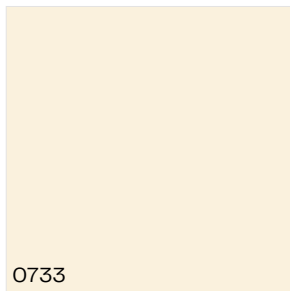
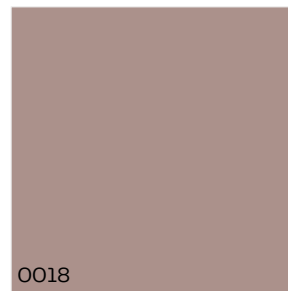
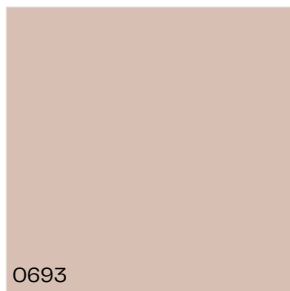
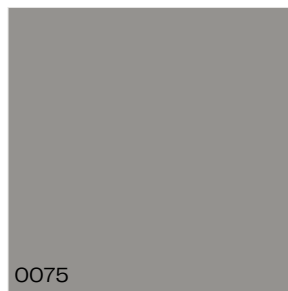
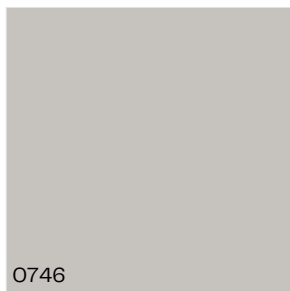
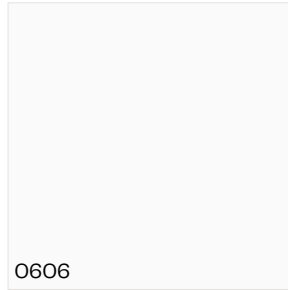


2289
TORTORA



0077
CHARCOAL

FURTHER DECOR OPTIONS:





SAXUM (SX)

Core:
Jet-black

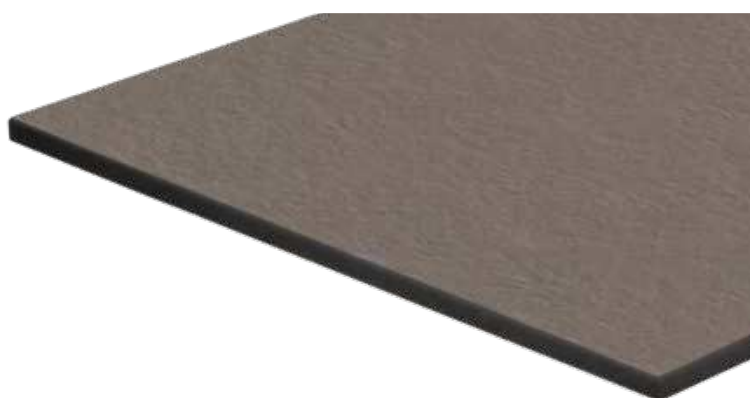
Decor:
Solid

Surface:
Anti-fingerprint
Matte
Natural stone structure

SAXUM (SX)



The deeply structured surface makes elegant stone formations tangible. Optimized for use in the kitchen area, it impresses day after day with its easy care. The matte finish has an anti-fingerprint effect.



0755
WARM GREY DARK

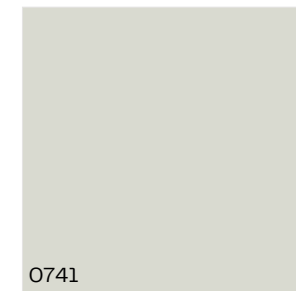
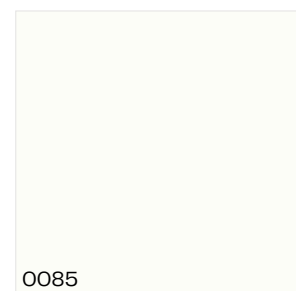


0077
CHARCOAL



0080
BLACK

FURTHER DECOR OPTIONS:







ENDURO (NN)

Core:
Jet black

Decor:
Material

Surface:
Anti-fingerprint
Matte
Natural stone structure

ENDURO (NN)

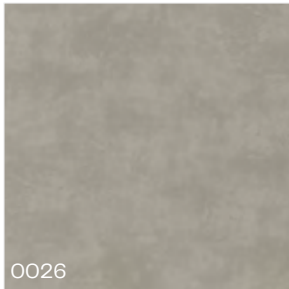


The highly structured surface conveys the visual appearance of natural stone. In connection with lifelike decors, Enduro conveys the dynamic stability that makes a countertop the focus of every kitchen. The matt finish with anti-fingerprint effect ensures a flawless look at all times.



0027
PRADO AGATE GREY

FURTHER DECOR OPTIONS:



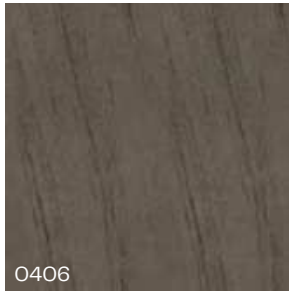
0026



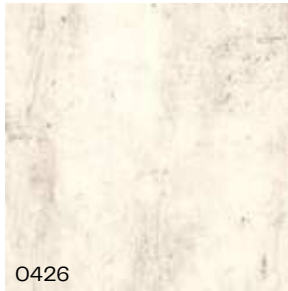
0344



0394



0406



0426



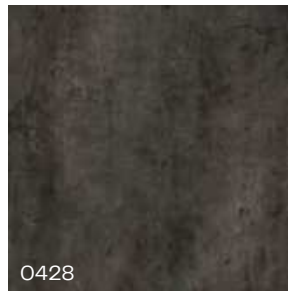
0427



0386



0421



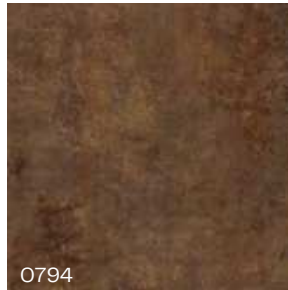
0428



0497



0793



0794



RIGO (RO)

Core:
Jet black

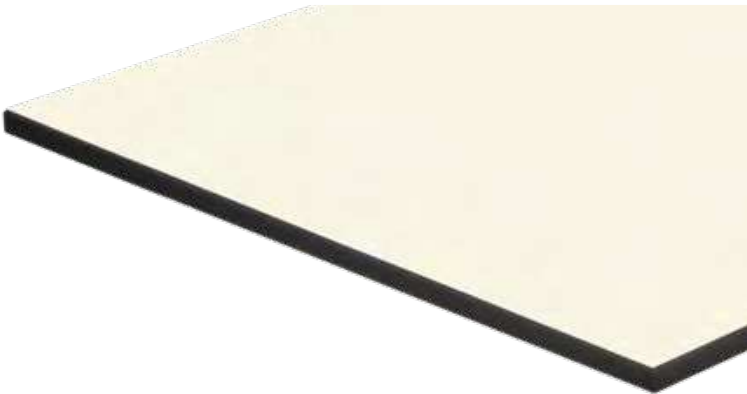
Decor:
Solid

Surface:
Anti-fingerprint
Deep matte
Fine structure

RIGO (RO)

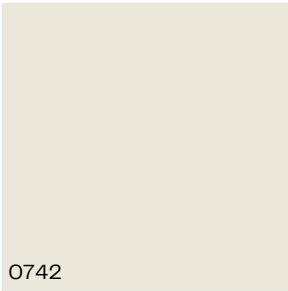


Rigo impresses with a fine structure that conveys a sandy, roughened surface. The deep matt finish of the surface is always perfect thanks to the anti-fingerprint effect.



0085
WHITE

**FURTHER
DECOR OPTIONS:**





**FINE HAMMER
EMBOSSSED (FH)**

Core:

Jet black or white

Decor:

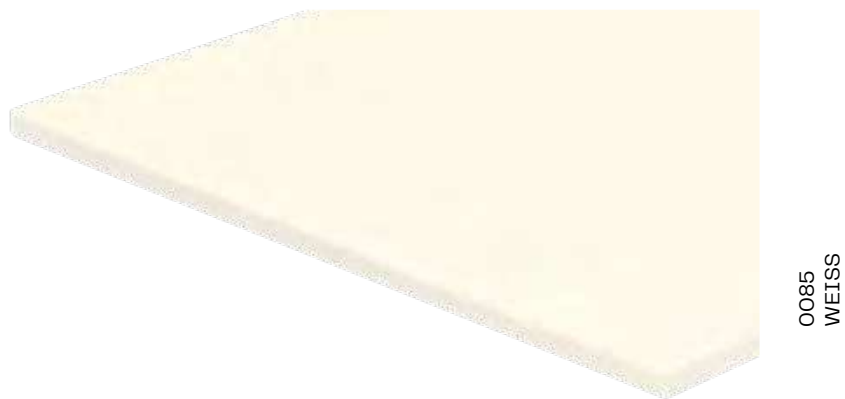
Interior Collection;
According to the valid
delivery program

Surface:

Calm structure
Light shimmer

FINE HAMMER EMBOSSED (FH)

The classic surface has proven itself in interior design for many years. The calm structure of the surface creates a harmonious overall impression that perfectly accentuates the respective decor.



FURTHER DECOR OPTIONS:

Discover the variety of the more than 150 FH surface decors in our Fundermax Interior collection:
www.fundermax.at/interior



NT (NT)

Core:
Brown

Decor:
Solid, material and natural
decors from the Exterior
Range of decors

Surface:
Fine hammer blow
Silk matte effect
Fine structure

NT (NT)

NT gets its character from an impression of a fine hammer blow, which creates an elegant overall impression through its delicate structure. Particularly beautiful effects are achieved with wood decors which, in combination with the brown core of the panel, achieve the highest level of authenticity.



0794
PATINA BRONZE

FURTHER DECOR OPTIONS:

Discover the variety of more than 100 decors with NT surfaces in our Fundermax Exterior collection:
www.fundermax.at/interior



DELIVERY OPTIONS

Surfaces:

Aptico (AP)	Rear side: RR
Saxum (SX)	Top: IP*
Enduro (NN)	Top: NW (NT)*
Rigo (RO)	Rear side: IP
Feinhammerschlag (FH)	Rear side: FH
NT	Rear side: NT

*Due to production, the surfaces Saxum and Enduro are on the rear side of the panel

Dimensions: 4,100 x 1,300 mm

Thickness: 12 mm

SURFACES

Decor	Decor name	Group	AP	SX	NN	RO	FH	FH white core	NT
0018	Divaro	U	■						
0026	Prado Alu Grey	U			■		■	■	■
0027	Prado Agate Grey	M			■		■	■	■
0075	Dark Grey	U	■			■	■	■	■
0077	Charcoal	U	■	■			■	■	■
0080	Black	U	■	■			■	■	■
0085	White	U	■	■		■	■	■	■
0344	Riverside	M			■				■
0386	Blues	M			■				■
0394	Moonwalk	M			■	■			■
0406	Rockstar	M			■				■
0421	Venus	M			■				■
0426	Loft	M			■				■
0427	Skyline	M			■				■
0428	Cave	M			■				■
0497	Stonehenge	M			■				■
0606	Arctic White	U	■				■	■	
0693	Orchid	U	■				■	■	
0733	Hygienic White	U	■				■	■	■
0741	Birch Grey	U		■			■	■	■
0742	Pebble Grey	U				■	■	■	■
0746	Hygienic Grey	U	■				■	■	■
0753	Cool Grey Medium	U	■				■	■	■
0755	Warm Grey Dark	U	■	■			■	■	■
0793	Patina Tin	M			■				■
0794	Patina Bronze	M			■		■	■	■
2206	Fango	U	■				■	■	
2286	White Syringa	U		■			■	■	
2289	Tortora	U	■				■	■	■

Minimum order quantity: 1 panel

Decor group:
M = Material
U = Solid

Sample service:

www.fundermax.at/sampleservice

You can find more information about our products at:

www.fundermax.com

Fundermax Deutschland GmbH
Industriestrasse 1
D-92442 Wackersdorf
infoGermany@fundermax.biz
www.fundermax.de

Fundermax France SARL
3 Cours Albert Thomas
F-69003 Lyon
Tel: + 33(0)4 78 68 28 31
Fax: + 33(0)4 78 85 18 56
infoFrance@fundermax.biz
www.fundermax.fr

Fundermax India Pvt. Ltd.
Sy. No. 7, Honnenahalli Village
Bengaluru-Doddballapur Highway Road
Yelahanka Hobli, Bangalore North Taluk
IND-560064 Bangalore
Tel: +96113 99211
officeIndia@fundermax.biz
www.fundermax.in

Fundermax Italia S.R.L.
Viale Venezia 22
I-33052 Cervignano del Friuli
infoItaly@fundermax.biz
www.fundermax.it

Fundermax North America, Inc.
9401-P Southern Pine Blvd.
US-Charlotte, NC 28273
Tel: +1 980 299 0035
Fax: +1 704 280 8301
office.america@fundermax.biz
www.fundermax.at

Fundermax Polska Sp. z o.o.
ul. Rybitwy 12
PL-30722 Kraków
Tel: + 48 (0) 12 65 34 528
Fax: + 48 (0) 12 65 70 545
infoPoland@fundermax.biz

Fundermax Russia Show:room
of.203, bld.2, 10, Nizhnyaya
Syromyatnicheskaya str.,
RU-Moscow, 105120
Tel: +7 (499)130-3094
fundermax.ru@fundermax.biz
www.fundermax.ru

Fundermax Swiss AG
Industriestrasse 38
CH-5314 Kleindöttingen
Tel: + 41 (0)56-268 83 11
Fax: + 41(0)56-268 83 10
infoSwiss@fundermax.biz
www.fundermax.ch

Fundermax GmbH

Klagenfurter Straße 87-89, A-9300 St. Veit/Glan
T +43 (0) 5/9494-0, F +43 (0) 5/9494-4200
office@fundermax.at, www.fundermax.at